



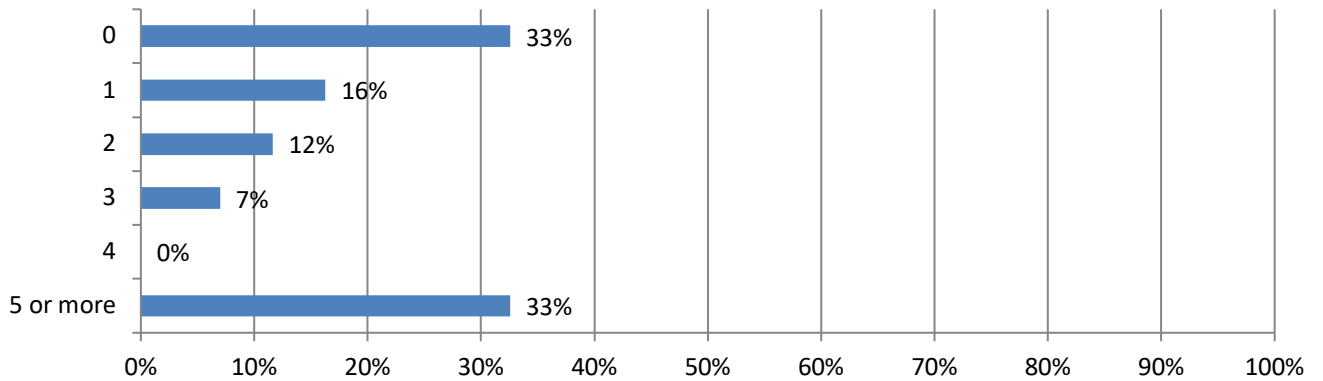
AGC
THE CONSTRUCTION
ASSOCIATION

2020 Work Zone Awareness Survey Results

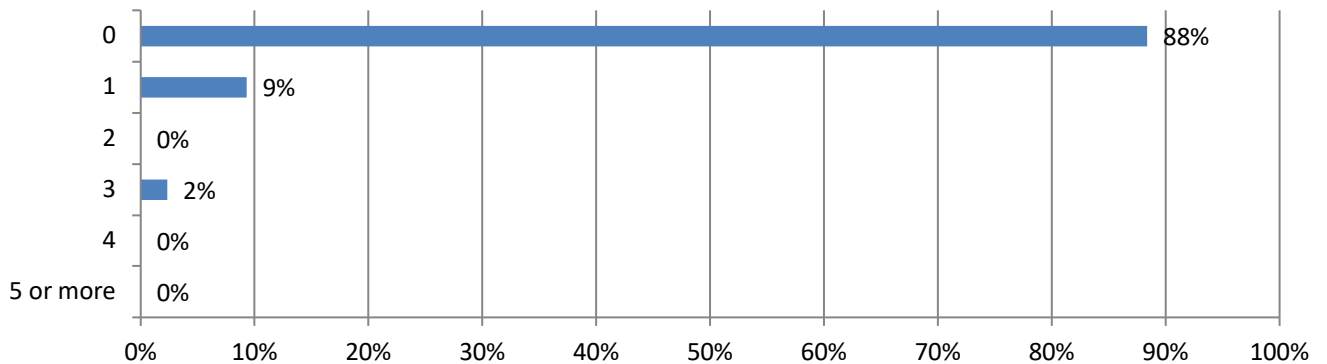
Midwest Results

Total 49 responses; Responses varied for some questions. Percentages are based on responses to each question and may not sum to 100 due to rounding (total specified in some questions).

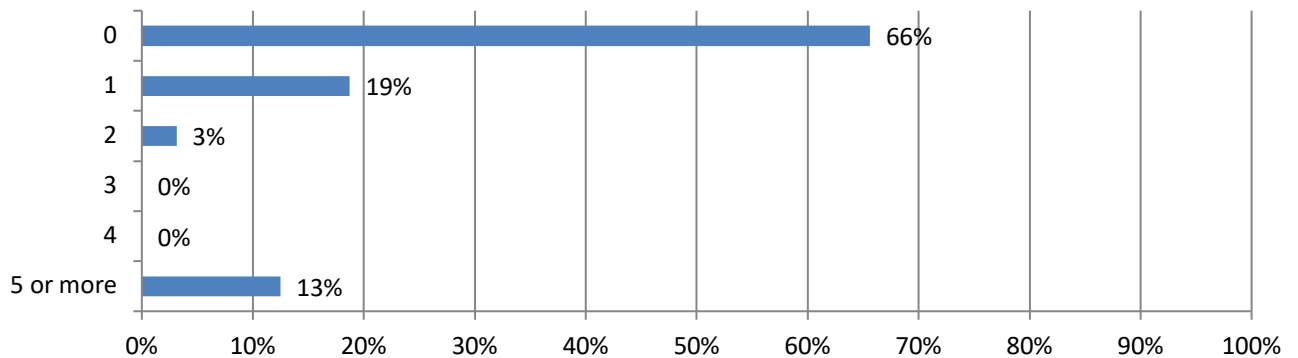
1. In the past 12 months, how many crashes involving a motor vehicle have occurred at a highway work zone where your firm operates? (43 Responses)



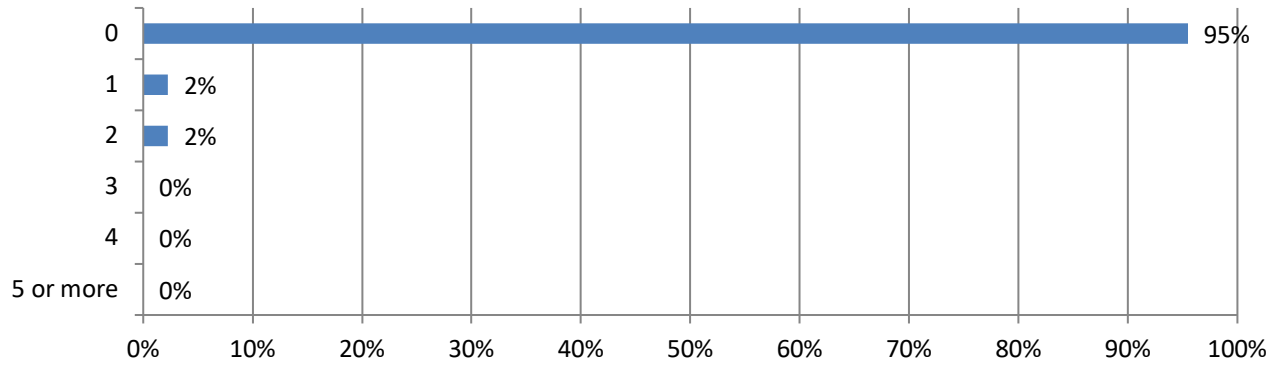
2. How many construction workers were injured in these crashes? (43 Responses)



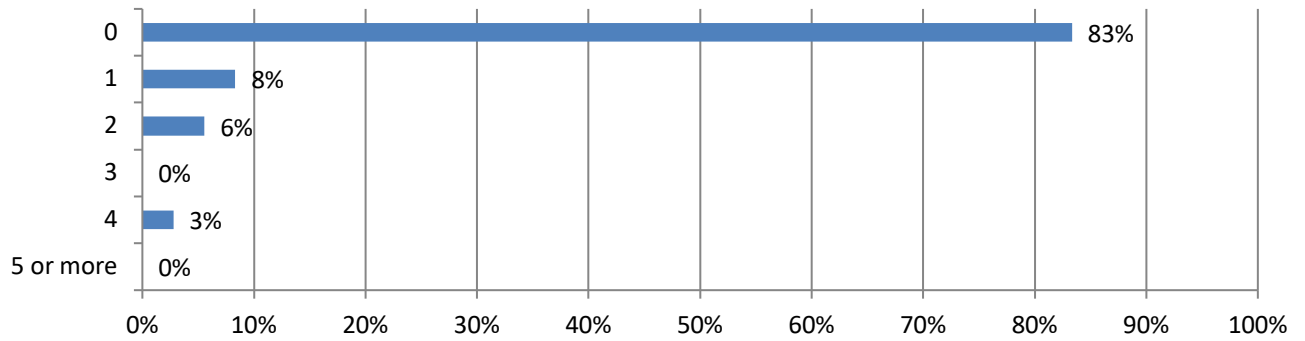
3. How many drivers or passengers were injured in these crashes? (32 Responses)



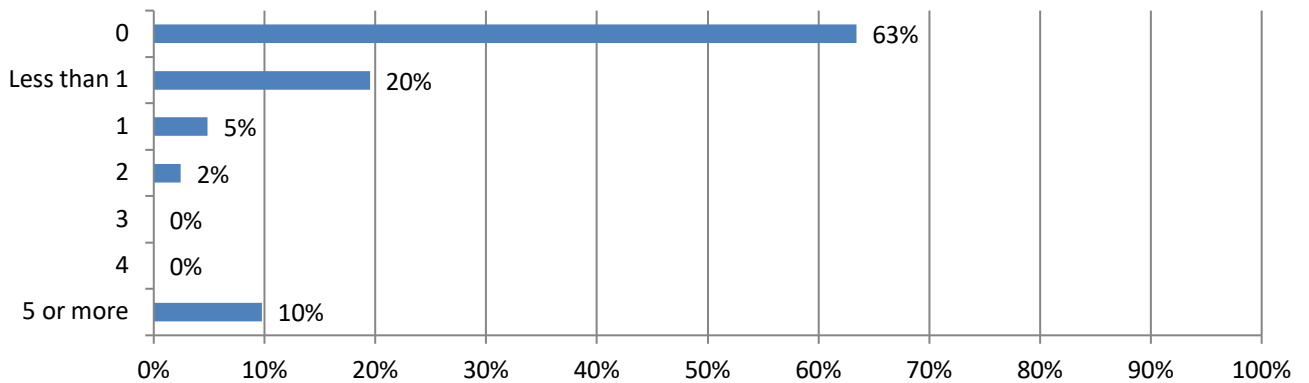
4. How many construction worker fatalities resulted from these crashes? (44 Responses)



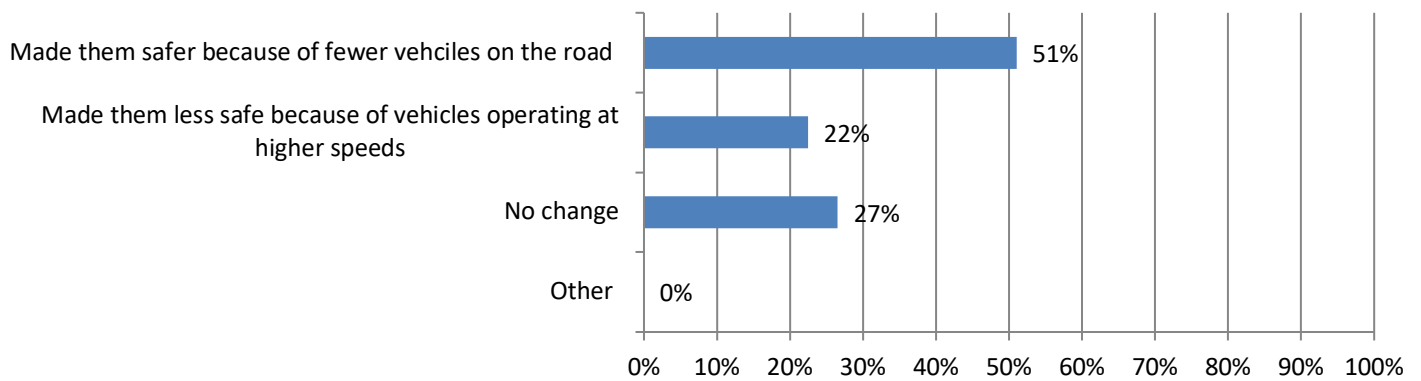
5. How many driver or passenger fatalities resulted from these crashes? (36 Responses)



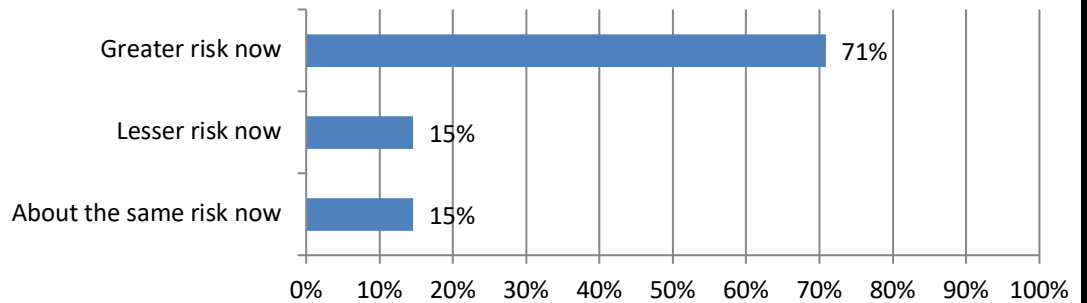
6. How many days have your firm's projects been delayed because of these crashes? (41 Responses)



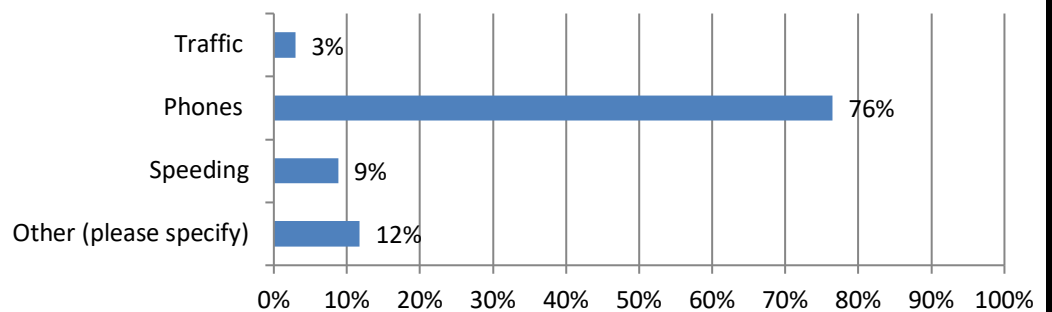
7. How have changes in highway traffic levels since the coronavirus impacted safety in highway work zones? (49 Responses)



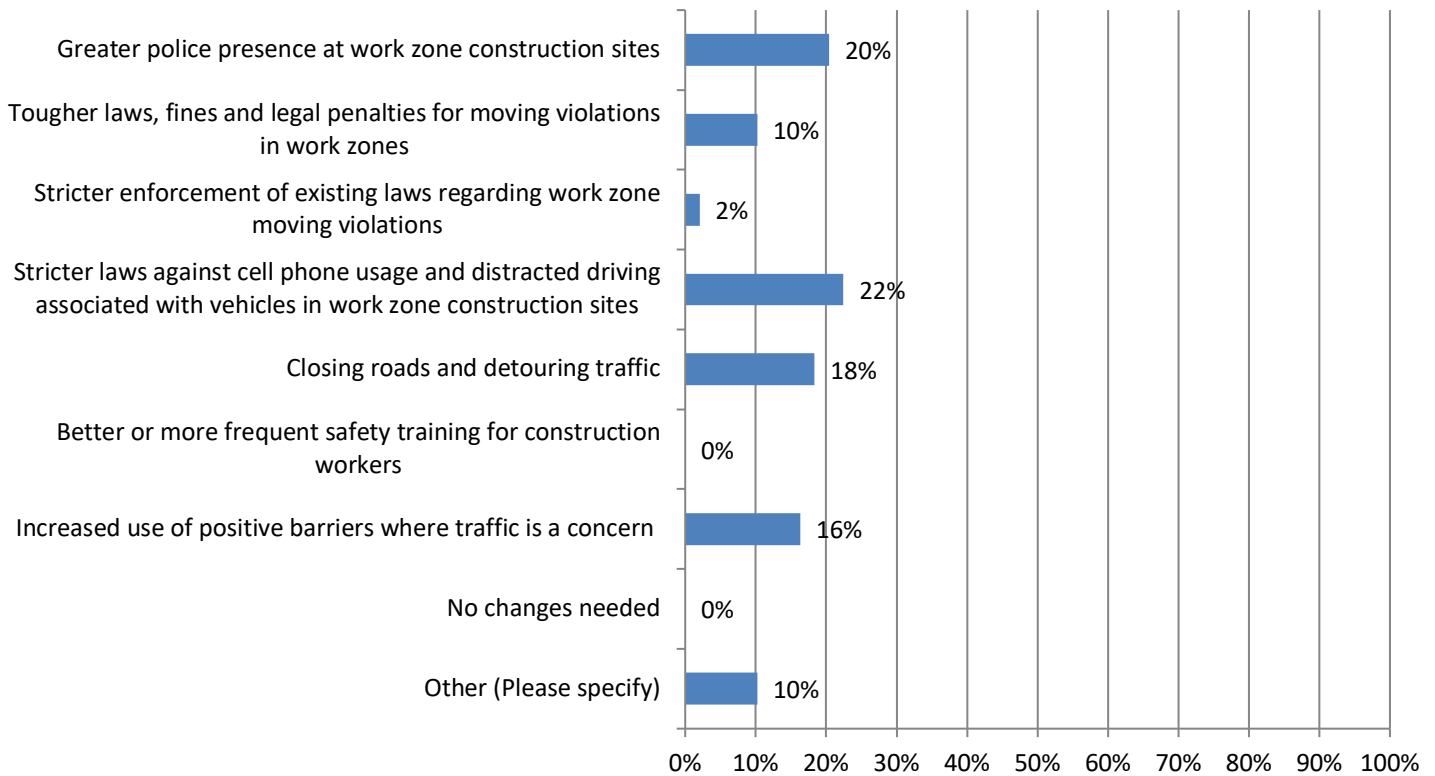
8. In your opinion, how much of a risk are highway work zone crashes now compared to a decade ago? (48 Responses)



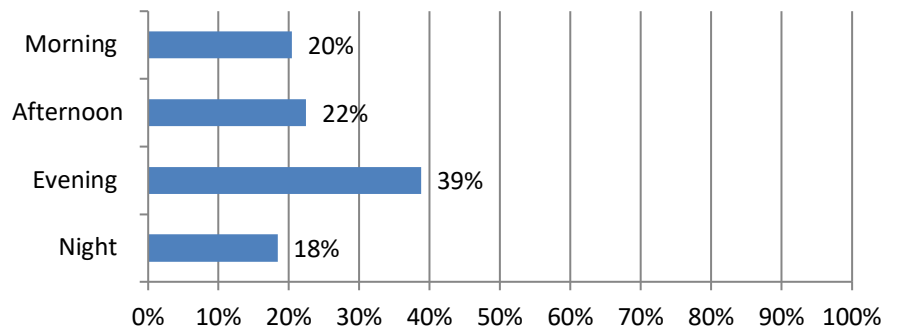
9. Why do you think highway work zone construction is more dangerous today compared to a decade ago? (Check all that apply) (34 Responses)



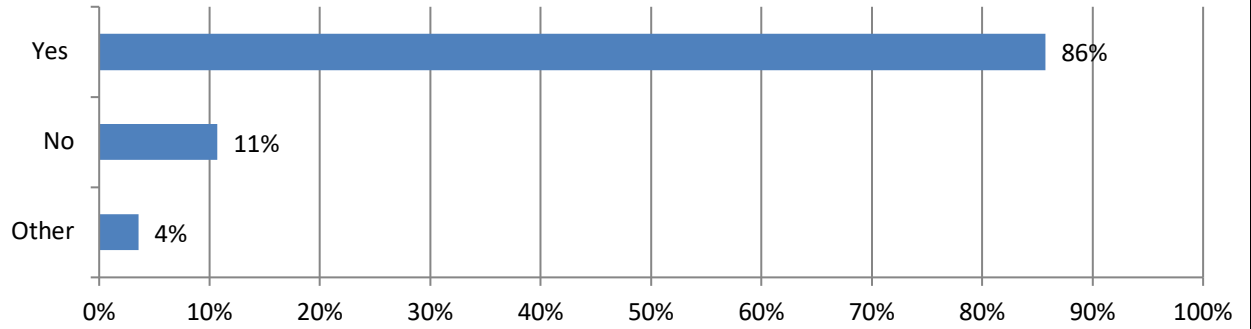
10. Would any of these measures help reduce the number of highway work zone crashes, injuries and/or fatalities? (Check all that apply) (49 Responses)



11. Is there a particular time of day where motorist intrusion into work zones occurs most often? (49 Responses)



12. Is there an increase in incidence when performing night work? (28 Responses)



13. If you answered yes, what do you attribute this to? (24 Responses)

