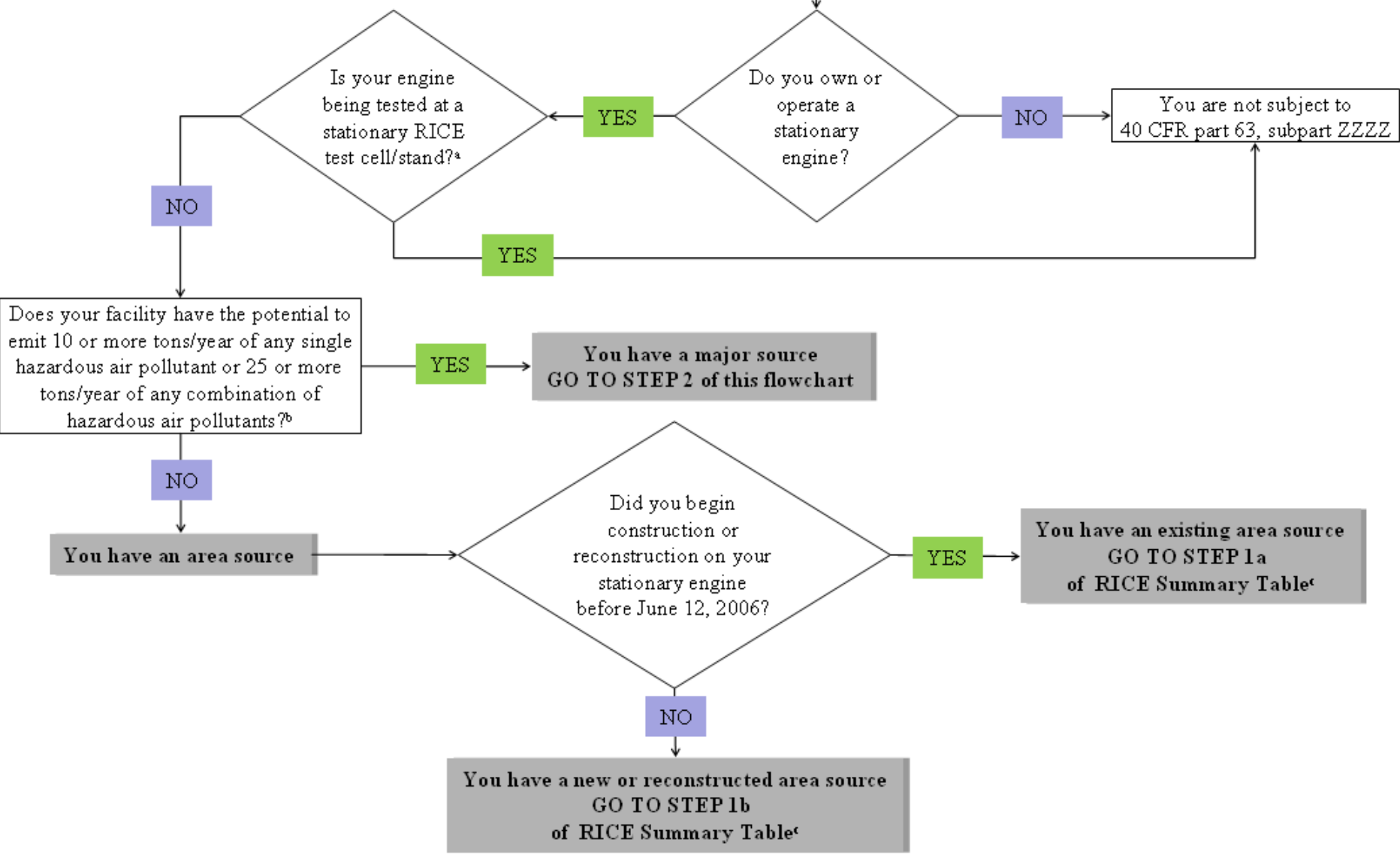


Stationary Reciprocating Internal Combustion Engines (RICE)

40 CFR part 63, subpart ZZZZ

Applicability Flowchart

START



^aAn engine test cell/stand is any apparatus used for testing uninstalled stationary or uninstalled mobile (motive) engines.

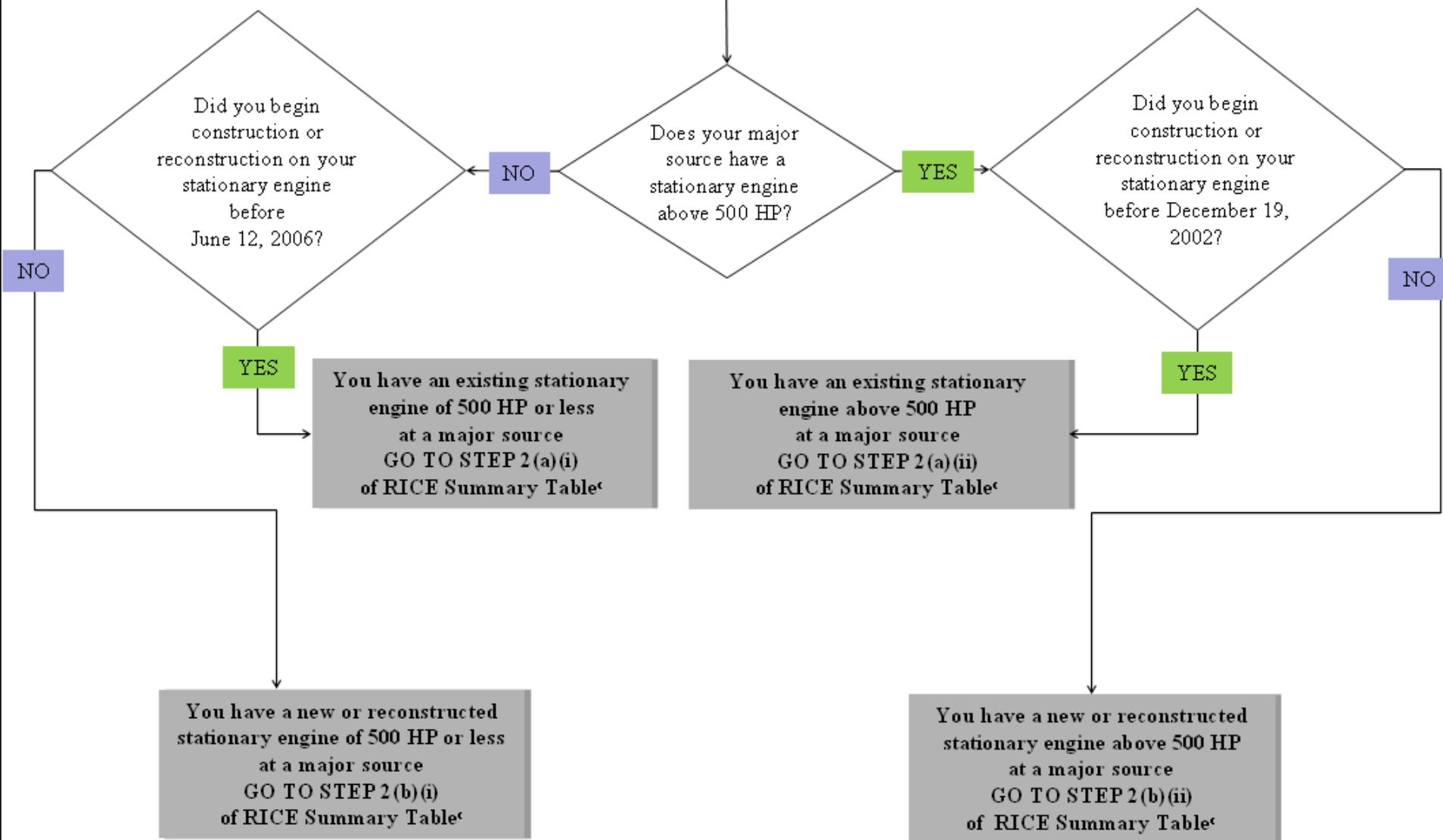
^bFor assistance in determining the potential to emit, please refer to <http://www.epa.gov/ttn/chief/ap42/index.html> or contact your EPA regional office or state permitting staff. To determine the potential to emit, you may use emission factors from <http://www.epa.gov/ttn/chief/ap42/ch03/index.html>, test data, or other published information.

Stationary Reciprocating Internal Combustion Engines (RICE)

40 CFR part 63, subpart ZZZZ

Applicability Flowchart

STEP 2



†The RICE Summary Table of Requirements provides additional information on 40 CFR part 63, subpart ZZZZ requirements and is available at 2

<http://www.epa.gov/ttn/atw/rice/ricepg.html>.